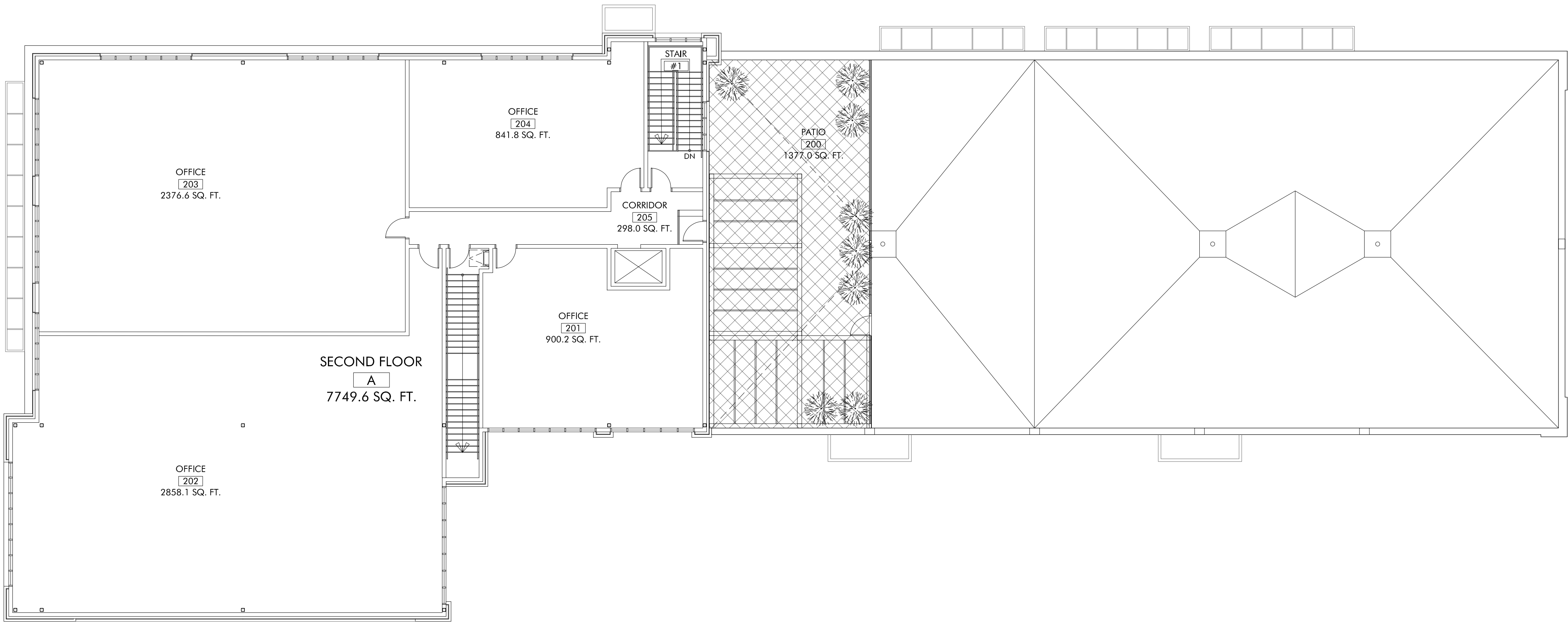


© This drawing is the copyright of Brian Allsopp Architect Ltd. and may not be reproduced without permission.

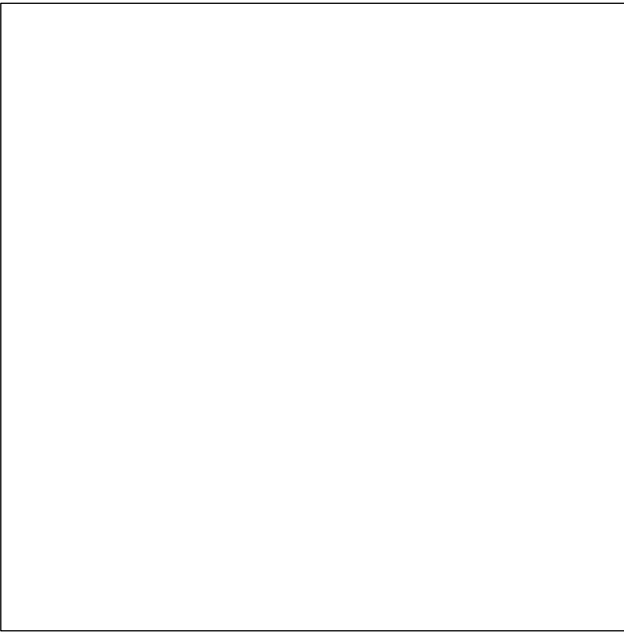
Contractor shall read drawing in conjunction with written specifications. All area calculations, dimensions and conditions shall be verified on site. Readers are advised to use at your own risk. Any questions shall be directed to the Architect prior to proceeding with construction. Do not scale drawings.



 **1** SECOND FLOOR PLAN
A102 3/32" = 1'-0"



PRELIMINARY
NOT FOR CONSTRUCTION



REVISIONS		MM.DD.YYYY
1	ISSUED FOR PRE-APPLICATION MEETING	07.16.2021

ERICKORP
PEMBINA ROAD

"BUILDING A"

895 Pembina Road
Sherwood Park, Alberta

Brian Allsopp
Architect Ltd.

1020 Parsons Road SW
Edmonton, Alberta, Canada T6X 0J4
Phone 780 433-7828
Fax 780 433-7371
info@brianallsopp.com
www.brianallsopp.com

SECOND FLOOR PLAN	
JULY 16, 2021	A102
JOB # 2110	
DRAWN BY: AB	